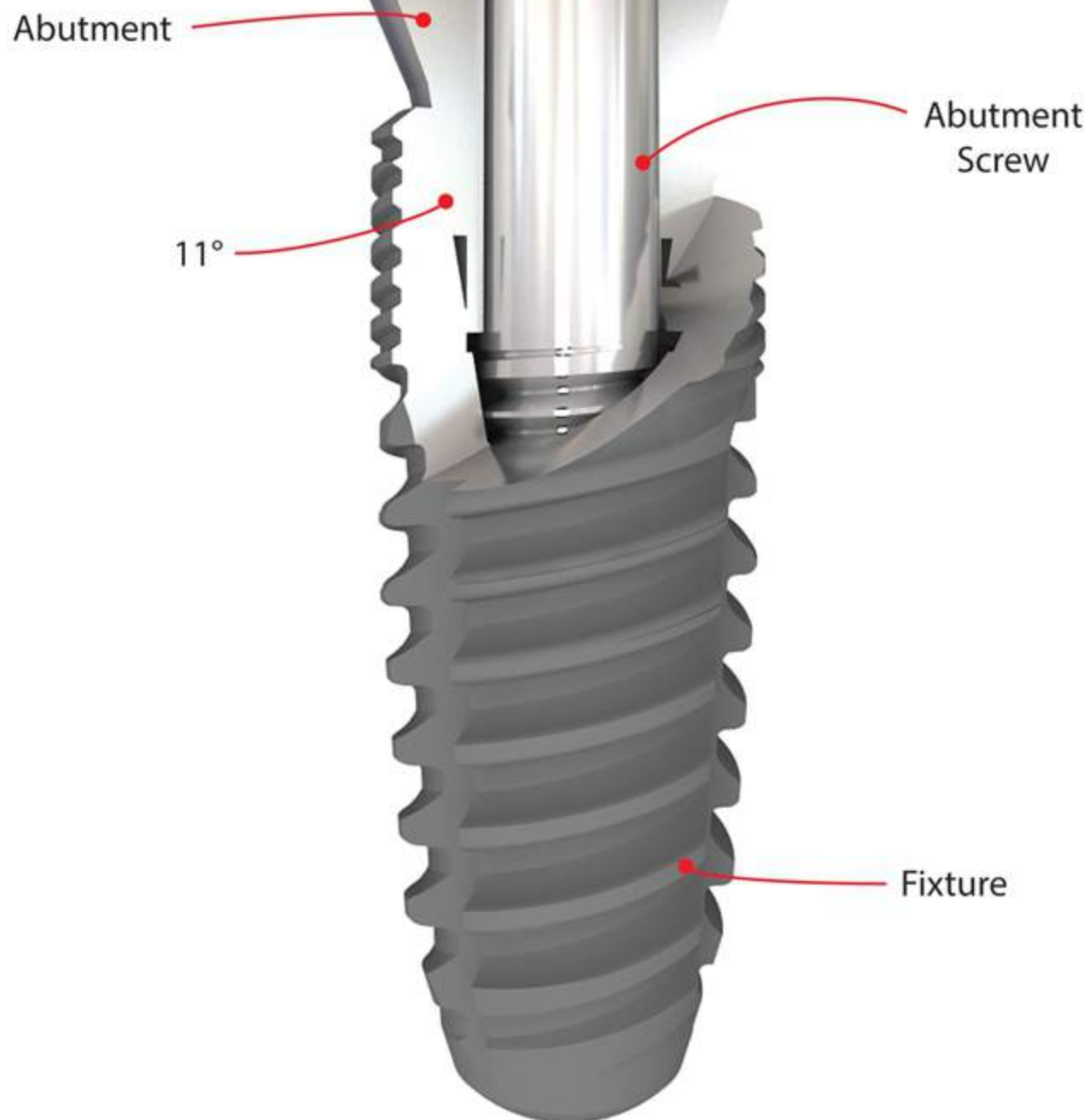


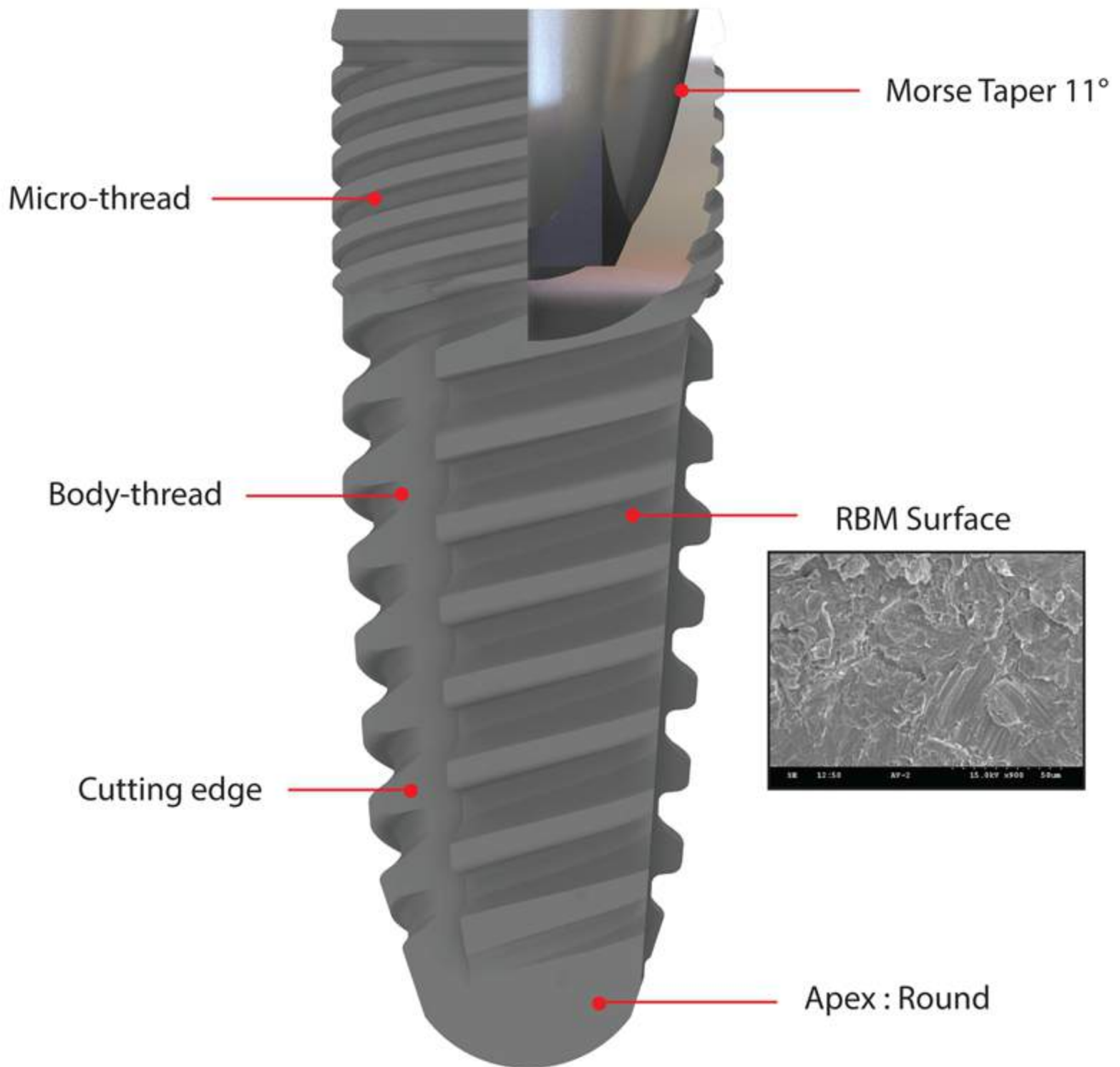
Submerged System



Submerged Fixture



Connection : Hexagon



Morse Taper 11°

Micro-thread

Body-thread

RBM Surface

Cutting edge

Apex : Round

Flow Chart



Ø3.5 Fixture & Abutment

Ø3.5 Fixture (Small)



L (Length)	Pro. Code
8	C3FS08
10	C3FS10
12	C3FS12
14	C3FS14

Impression Coping (Pick-up)



Ø (Diameter)	C (Collar)	Pro. Code
4.0	1.5	CIP4015
4.0	3.5	CIP4035

*Coping Pin (IPPS-21)

Cover Screw



Ø (Diameter)	L (Length)	Pro. Code
2.83	6.0	CCS283

Cementation Abutment



Ø (Diameter)	C (Collar)	Pro. Code
4.0	1.5	CCEA4015
4.0	3.5	CCEA4035

Healing Abutment



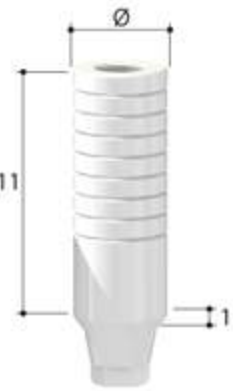
Ø (Diameter)	C (Collar)	Pro. Code
4.0	1.5	CHA4015
4.0	3.5	CHA4035

Angled Abutment



Ø (Diameter)	C (Collar)	Pro. Code
4.0	1.5	CAA401520
4.0	3.5	CAA403520

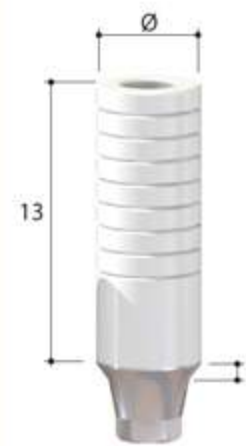
Plastic UCLA Abutment



Ø (Diameter)	Pro. Code	Type
4.5	UA4510-21	Hex
4.5	UA4510N-21	Non-Hex



Cr-Co UCLA Abutment



Ø (Diameter)	Pro. Code	Type
4.5	Cr.UA4510-21	Hex
4.5	Cr.UA4510N-21	Non-Hex



Fixture Analogue



Ø (Diameter)	L (Length)	Pro. Code
3.5	12	FA35-21

Abutment Screw



Ø (Diameter)	L (Length)	Pro. Code
1.6	8.3	AS16-21

Fixture & Abutment

Ø3.8 Fixture (Narrow)



L (Length)	Pro. Code
8	C3FN08
10	C3FN10
12	C3FN12
14	C3FN14

Healing Abutment



Ø (Diameter)	C (Collar)	Pro. Code
4.5	1.5	CHA4515
4.5	3.5	CHA4535
5.5	1.5	CHA5515
5.5	3.5	CHA5535
6.5	1.5	CHA6515
6.5	3.5	CHA6535

Cementation Abutment



Ø (Diameter)	C (Collar)	Pro. Code
4.5	1.5	CCEA4515
4.5	3.5	CCEA4535
5.5	1.5	CCEA5515
5.5	3.5	CCEA5535
6.5	1.5	CCEA6515
6.5	3.5	CCEA6535

Milling Abutment



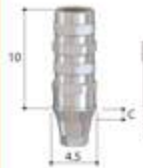
Ø (Diameter)	C (Collar)	H (Height)	Pro. Code
4.5	2.0	10	CMA45
5.5	2.5	9.5	CMA55
6.5	3.0	9.0	CMA65

Ø4.2 Fixture (Medium)



L (Length)	Pro. Code
8	C3FM08
10	C3FM10
12	C3FM12
14	C3FM14

Temporary Abutment



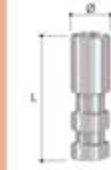
C (Collar)	Pro. Code	Type
1.5	CTA4515	Hex
3.5	CTA4535	Hex
1.5	CTA4515N	Non-Hex
3.5	CTA4535N	Non-Hex

Angled Abutment - 15°



Ø (Diameter)	C (Collar)	Pro. Code
4.5	1.5	CAA451515
4.5	3.5	CAA453515
5.5	1.5	CAA551515
5.5	3.5	CAA553515

Fixture Analogue



Ø (Diameter)	L (Length)	Pro. Code
3.8	12	CAN38

Ø4.6 Fixture (Regular)



L (Length)	Pro. Code
8	C3FR08
10	C3FR10
12	C3FR12
14	C3FR14

Impression Coping (Pick-up)



Ø (Diameter)	C (Collar)	Pro. Code
4.5	1.5	CIP4515
4.5	3.5	CIP4535
5.5	1.5	CIP5515
5.5	3.5	CIP5535
6.5	1.5	CIP6515
6.5	3.5	CIP6535

Angled Abutment - 20°



Ø (Diameter)	C (Collar)	Pro. Code
4.5	1.5	CAA451520
4.5	3.5	CAA453520
5.5	1.5	CAA551520
5.5	3.5	CAA553520

Retainer Abutment



C (Collar)	Pro. Code
1.0	CSRA3910
2.0	CSRA3920
3.0	CSRA3930
4.0	CSRA3940
5.0	CSRA3950
6.0	CSRA3960
7.0	CSRA3970

Ø5.3 Fixture (Wide)



L (Length)	Pro. Code
8	C3FW08
10	C3FW10
12	C3FW12
14	C3FW14

Impression Coping (Transfer)



Ø (Diameter)	C (Collar)	Pro. Code
4.5	1.5	CIT4515
4.5	3.5	CIT4535
5.5	1.5	CIT5515
5.5	3.5	CIT5535
6.5	1.5	CIT6515
6.5	3.5	CIT6535

Plastic UCLA Abutment



Ø (Diameter)	Pro. Code	Type
4.5	CUAPH	Hex
4.5	CUAPN	Non-Hex

Customized Abutment



Ø (Diameter)	Pro. Code
10	CAB10M
14	CAB14M

Cover Screw



Ø (Diameter)	L (Length)	Pro. Code
3.35	6.5	CC5335

Abutment Screw



Ø (Diameter)	L (Length)	Pro. Code
2	10	AS20-25

Cr-Co UCLA Abutment



Ø (Diameter)	Pro. Code	Type
4.5	CrCUAPH	Hex
4.5	CrCUAPN	Non-Hex

Surgical KIT

Submerged KIT

		S Ø3.5 Ø3.3	N Ø3.8 Ø3.6	M Ø4.2 Ø4.0	R Ø4.6 Ø4.4	W Ø5.3 Ø5.1
1 Guide Drill GLD225	2 Ø2.25 CSID225	3 Ø2.8 PFD28I	4 Ø3.3 8/10mm CSFD3410	5 Ø3.7 8/10mm CSFD3810	6 Ø4.1 8/10mm CSFD4110	7 Ø4.8 8/10mm CSFD4810
32 CSDE Drill Extension	33 CSPP2030 Parallel Pin	17 Ø3.4 Reamer CSR34	6 Ø3.3 12/14mm CSFD3414	9 Ø3.7 12/14mm CSFD3814	12 Ø4.1 12/14mm CSFD4114	15 Ø4.8 12/14mm CSFD4814
22 Hand Ø3.5 Fixture Machine 23	24 Short Machine 25 Long	4 Ø3.2 Hard Bone CSFD3214	18 Ø3.7 Reamer CSR37	19 Ø4.1 Reamer CSR41	20 Ø4.5 Reamer CSR45	21 Ø5.2 Reamer CSR52
	26 Short Machine 27 Long	7 Ø3.5 Hard Bone CSFD3514	7 Ø3.5 Hard Bone CSFD3514	10 Ø3.9 Hard Bone CSFD3914	13 Ø4.3 Hard Bone CSFD4314	16 Ø5.0 Hard Bone CSFD5014
		Mountless Driver		Torx Driver		

1. Guide Drill (CSGD225)



2. Ø2.25 Initial Drill (CSID225)



3. Ø2.8 Pre-Final Drill (PFD28I)



4. Ø3.2 Twist Drill (CSFD3214)



5. Ø3.3 Twist Drill 8/10mm (CSFD3410)



6. Ø3.3 Twist Drill 12/14mm (CSFD3414)



7. Ø3.5 Twist Drill (CSFD3514)



8. Ø3.7 Twist Drill 8/10mm (CSFD3810)



9. Ø3.7 Twist Drill 12/14mm (CSFD3814)



10. Ø3.9 Twist Drill (CSFD3914)



11. Ø4.1 Twist Drill 8/10mm (CSFD4110)



12. Ø4.1 Twist Drill 12/14mm (CSFD4114)



13. Ø4.3 Twist Drill (CSFD4314)



14. Ø4.8 Twist Drill 8/10mm (CSFD4810)



15. Ø4.8 Twist Drill 12/14mm (CSFD4814)



16. Ø5.0 Twist Drill (CSFD5014)



17. Ø3.4 Reamer (CSR34)



18. Ø3.7 Reamer (CSR37)



19. Ø4.1 Reamer (CSR41)



20. Ø4.5 Reamer (CSR45)



21. Ø5.2 Reamer (CSR52)



22. Ø3.5 Mountless Driver Hand (MDH14-21)



23. Ø3.5 Mountless Driver Machine (MDM14-21)



24. Mountless Driver Short Hand (MDH08-25)



25. Mountless Driver Long Hand (MDH14-25)



26. Mountless Driver Short Machine (MDM08-25)



27. Mountless Driver Long Machine (MDM14-25)



28. Torx Driver Short Hand (TDH13)



29. Torx Driver Long Hand (TDH18)



30. Torx Driver Short Machine (TDM08)



31. Torx Driver Long Machine (TDM18)



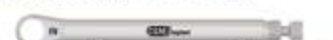
32. Drill Extension (CSDE)



33. Parallel Pin (CSPP2030)

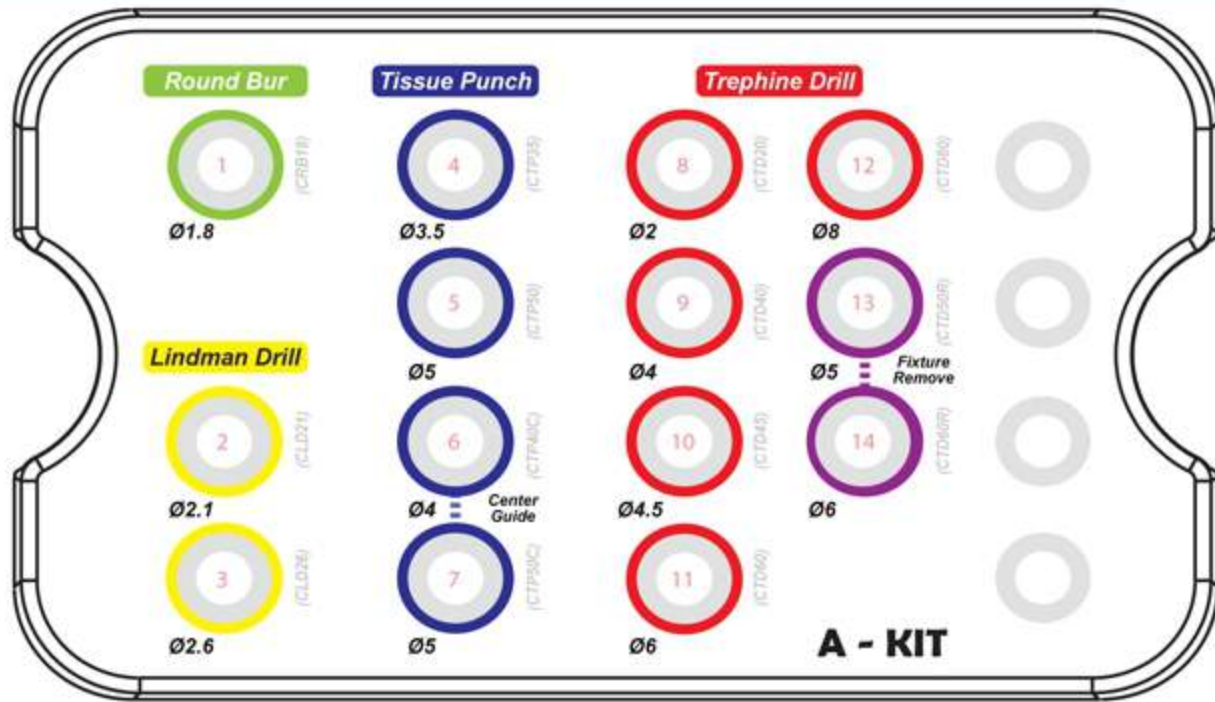


34. Ratchet Wrench (TWI/RWI)



*RED : NO. 4, 17, 22, 23 for Ø3.5 Fixture

A - KIT



Round Bur

1. Ø1.8 Round Bur (CRB18)



Lindman Drill

2. Ø2.1 Lindman Drill (CLD21)



3. Ø2.6 Lindman Drill (CLD26)



Tissue Punch

4. Ø3.5 Tissue Punch (CTP35)



5. Ø5.0 Tissue Punch (CTP50)



6. Ø4.0 Center Tissue Punch (CTP40C)



7. Ø5.0 Center Tissue Punch (CTP50C)



Trepine Drill

8. Ø2.0 Trepine Drill (CTD20)



9. Ø4.0 Trepine Drill (CTD40)



10. Ø4.5 Trepine Drill (CTD45)



11. Ø6.0 Trepine Drill (CTD60)



12. Ø8.0 Trepine Drill (CTD80)



13. Ø5.0 Fixture Remove (CTD50R)

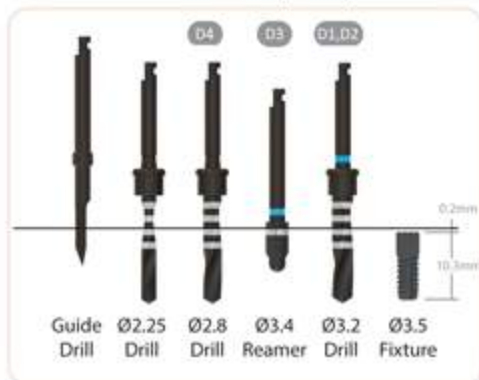


14. Ø6.0 Fixture Remove (CTD60R)



Drilling Sequences

Ø3.5 Fixture (10mm)



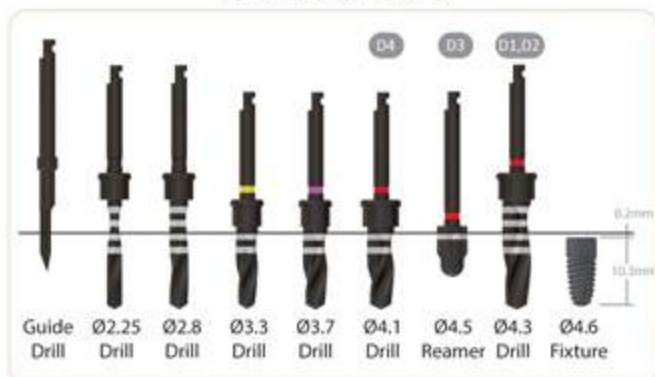
Ø3.8 Fixture (10mm)



Ø4.2 Fixture (10mm)



Ø4.6 Fixture (10mm)



Ø5.3 Fixture (10mm)



* 70N in sertion torque is recommended.

* Please be careful not to lose balance when drilling during operation.

How to open the package

01



Check the size of fixture and pull out the product from the box.

02



Rip off the paper on plastic case and pull out the ampoule.

03



Hold plastic ampoule and rotate the cap to open.

04



Check inside of fixture.

05



Pull out mountless driver carefully after it firmly combined with fixture by moving mountless driver right and left direction in the fixture.

06



Implantation (Use CSM mountless driver softly in right and left way till it firmly combined with fixture).

07



Hold up the ampoule cap and remove cap cover.

08



Use CSM torx driver and connect the screw and tighten coupling of the cover screw into the fixture.