

Submerged II System

Abutment

11°

Abutment
Screw

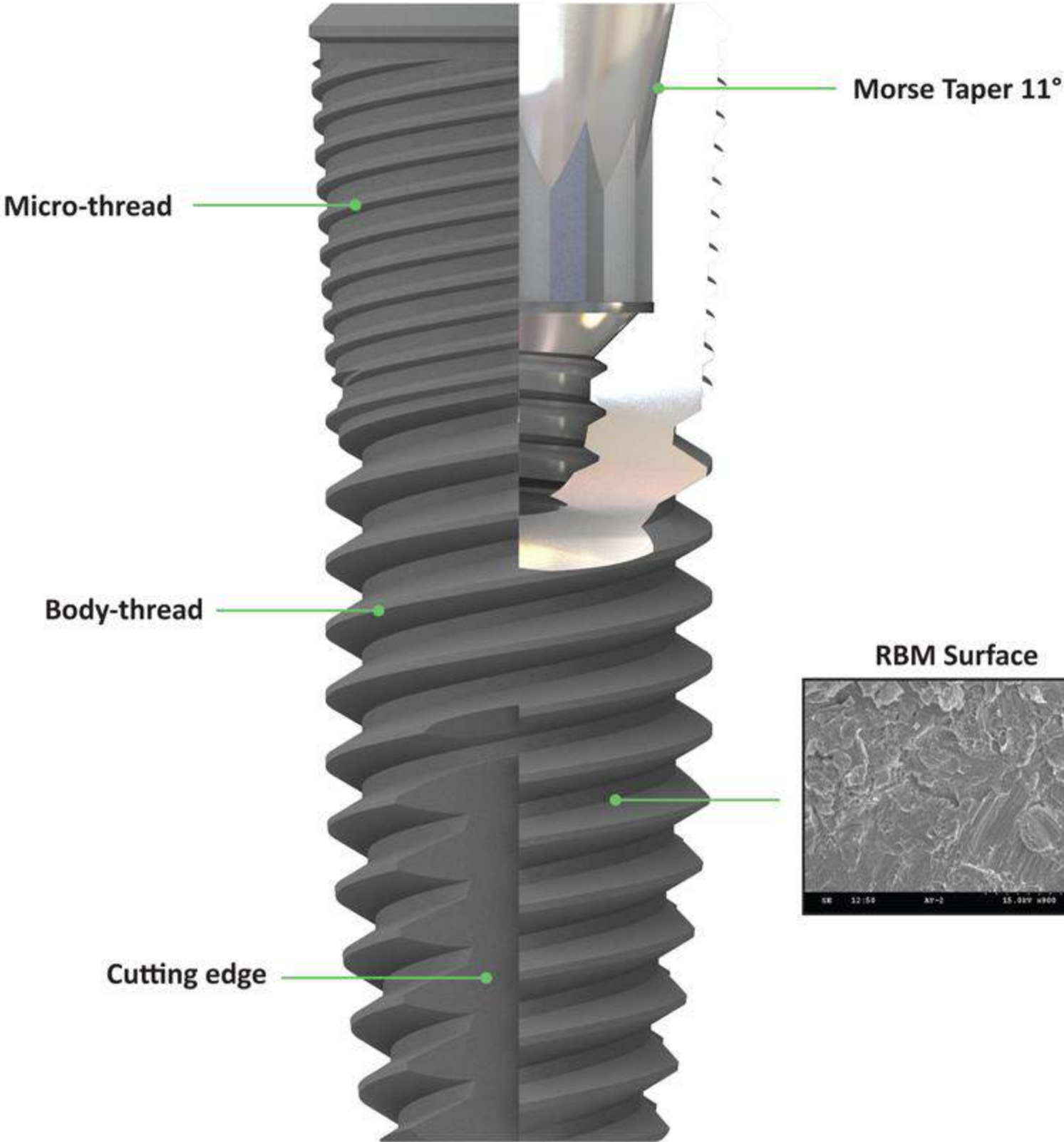
Fixture



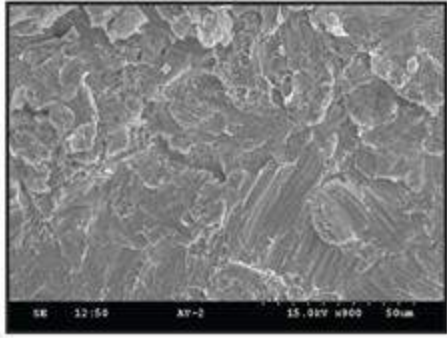
Submerged II Fixture



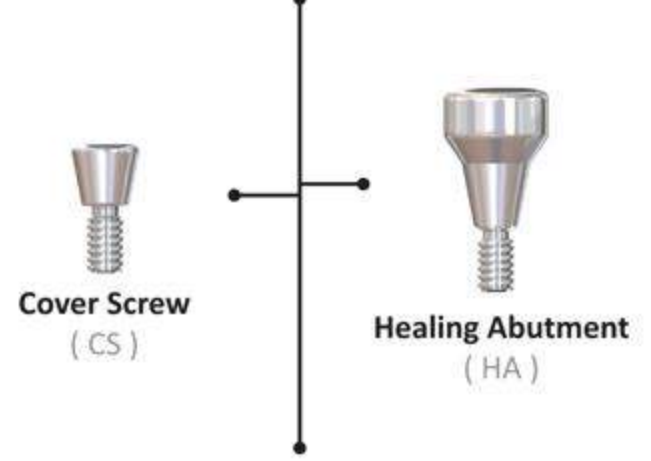
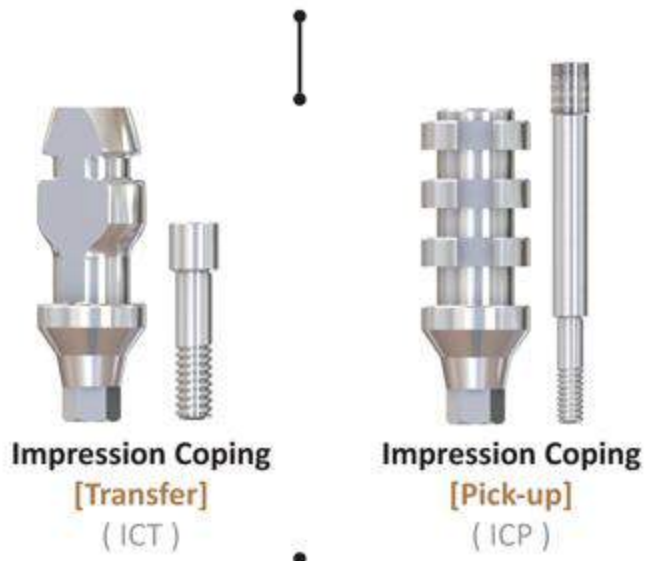
Connection :
Double Hexagon



RBM Surface



Flow Chart



2.1 Double Hex System

Ø3.5 Fixture



L (Length)	Pro. Code
8	C4F3508
9	C4F3509
10	C4F3510
12	C4F3512
14	C4F3514

Ø4.0 Fixture



L (Length)	Pro. Code
8	C4F4008
9	C4F4009
10	C4F4010
12	C4F4012
14	C4F4014

Cover Screw



L (Length)	Pro. Code
5.5	CS160-21

Healing Abutment



Ø (Diameter)	C (Collar)	Pro. Code
4.5	1.0	HA4510-21
4.5	1.5	HA4515-21
4.5	3.5	HA4535-21
5.5	1.5	HA5515-21
5.5	3.5	HA5535-21
6.5	1.5	HA6515-21
6.5	3.5	HA6535-21

Ø4.5 Fixture



L (Length)	Pro. Code
9	C4F4509
10	C4F4510
12	C4F4512
14	C4F4514

Ø5.0 Fixture



L (Length)	Pro. Code
9	C4F5009
10	C4F5010
12	C4F5012
14	C4F5014

Cover Screw



L (Length)	Pro. Code
7.0	CS200-25

Healing Abutment



Ø (Diameter)	C (Collar)	Pro. Code
4.5	1.0	HA4510-25
4.5	1.5	HA4515-25
4.5	3.5	HA4535-25
5.5	1.5	HA5515-25
5.5	3.5	HA5535-25
6.5	1.5	HA6515-25
6.5	3.5	HA6535-25

Impression Coping [Pick-up]



∅ (Diameter)	C (Collar)	Pro. Code
4.5	1.0	ICP4510-21
4.5	1.5	ICP4515-21
4.5	3.5	ICP4535-21
5.5	1.5	ICP5515-21
5.5	3.5	ICP5535-21
6.5	1.5	ICP6515-21
6.5	3.5	ICP6535-21

*Coping Pin (ICPPS-21)

Temporary Abutment



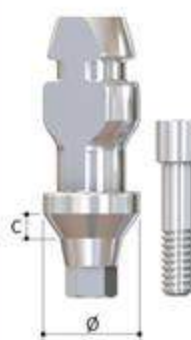
Type	C (Collar)	Pro. Code
Hex	1.0	TA4510-21
	1.5	TA4515-21
	3.5	TA4535-21
Non-Hex	1.0	TA4510N-21
	1.5	TA4515N-21
	3.5	TA4535N-21

Milling Abutment



∅ (Diameter)	C (Collar)	Pro. Code
4.5	1.0	MA4510-21
5.5	1.5	MA5515-21
6.5	3.5	MA6535-21

Impression Coping [Transfer]



∅ (Diameter)	C (Collar)	Pro. Code
4.5	1.0	ICT4510-21
4.5	1.5	ICT4515-21
4.5	3.5	ICT4535-21
5.5	1.5	ICT5515-21
5.5	3.5	ICT5535-21
6.5	1.5	ICT6515-21
6.5	3.5	ICT6535-21

Cementation Abutment



∅ (Diameter)	C (Collar)	Pro. Code
4.5	1.0	CA4510-21
4.5	1.5	CA4515-21
4.5	3.5	CA4535-21
5.5	1.5	CA5515-21
5.5	3.5	CA5535-21
6.5	1.5	CA6515-21
6.5	3.5	CA6535-21

Retainer Abutment



C (Collar)	Pro. Code
1.0	RA3910-21
2.0	RA3920-21
3.0	RA3930-21
4.0	RA3940-21
5.0	RA3950-21
6.0	RA3960-21
7.0	RA3970-21
8.0	RA3980-21
9.0	RA3990-21

Impression Coping [Pick-up]



∅ (Diameter)	C (Collar)	Pro. Code
4.5	1.0	ICP4510-25
4.5	1.5	ICP4515-25
4.5	3.5	ICP4535-25
5.5	1.5	ICP5515-25
5.5	3.5	ICP5535-25
6.5	1.5	ICP6515-25
6.5	3.5	ICP6535-25

*Coping Pin (ICPPS-25)

Temporary Abutment



Type	C (Collar)	Pro. Code
Hex	1.0	TA4510-25
	1.5	TA4515-25
	3.5	TA4535-25
Non-Hex	1.0	TA4510N-25
	1.5	TA4515N-25
	3.5	TA4535N-25

Milling Abutment



∅ (Diameter)	C (Collar)	Pro. Code
4.5	1.0	MA4510-25
5.5	1.5	MA5515-25
6.5	3.5	MA6535-25

Impression Coping [Transfer]



∅ (Diameter)	C (Collar)	Pro. Code
4.5	1.0	ICT4510-25
4.5	1.5	ICT4515-25
4.5	3.5	ICT4535-25
5.5	1.5	ICT5515-25
5.5	3.5	ICT5535-25
6.5	1.5	ICT6515-25
6.5	3.5	ICT6535-25

Cementation Abutment



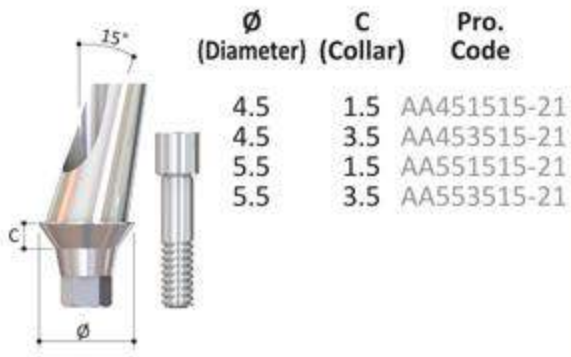
∅ (Diameter)	C (Collar)	Pro. Code
4.5	1.0	CA4510-25
4.5	1.5	CA4515-25
4.5	3.5	CA4535-25
5.5	1.5	CA5515-25
5.5	3.5	CA5535-25
6.5	1.5	CA6515-25
6.5	3.5	CA6535-25

Retainer Abutment



C (Collar)	Pro. Code
1.0	RA3910-25
2.0	RA3920-25
3.0	RA3930-25
4.0	RA3940-25
5.0	RA3950-25
6.0	RA3960-25
7.0	RA3970-25
8.0	RA3980-25
9.0	RA3990-25

Angled Abutment 15°



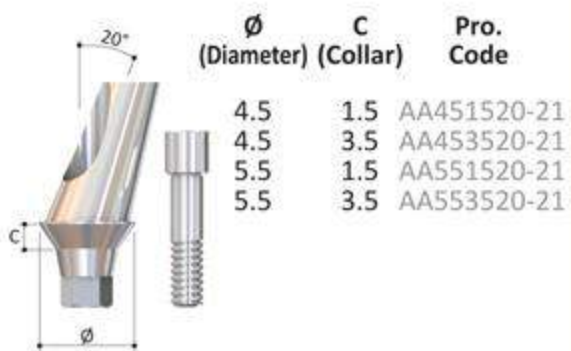
Plastic UCLA Abutment



Fixture Analogue



Angled Abutment 20°



Cr-Co UCLA Abutment



Abutment Screw



Angled Abutment 15°



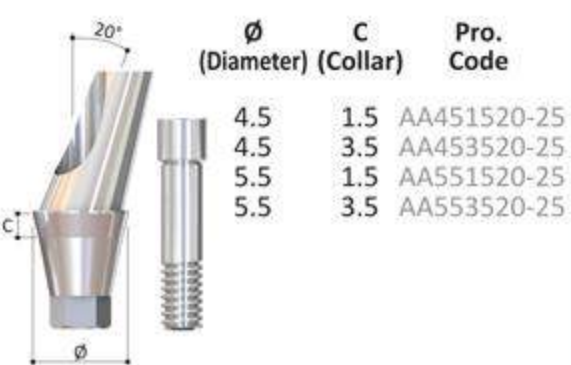
Plastic UCLA Abutment



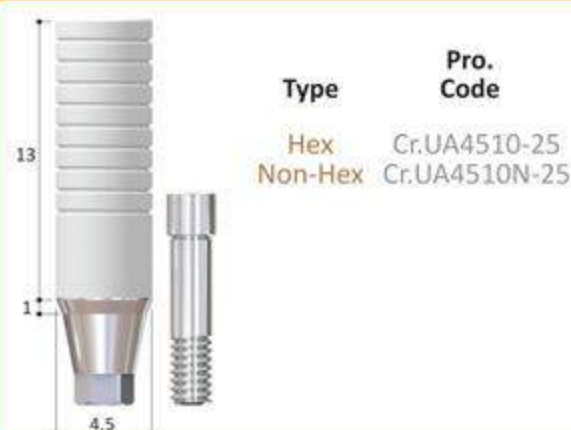
Fixture Analogue



Angled Abutment 20°



Cr-Co UCLA Abutment

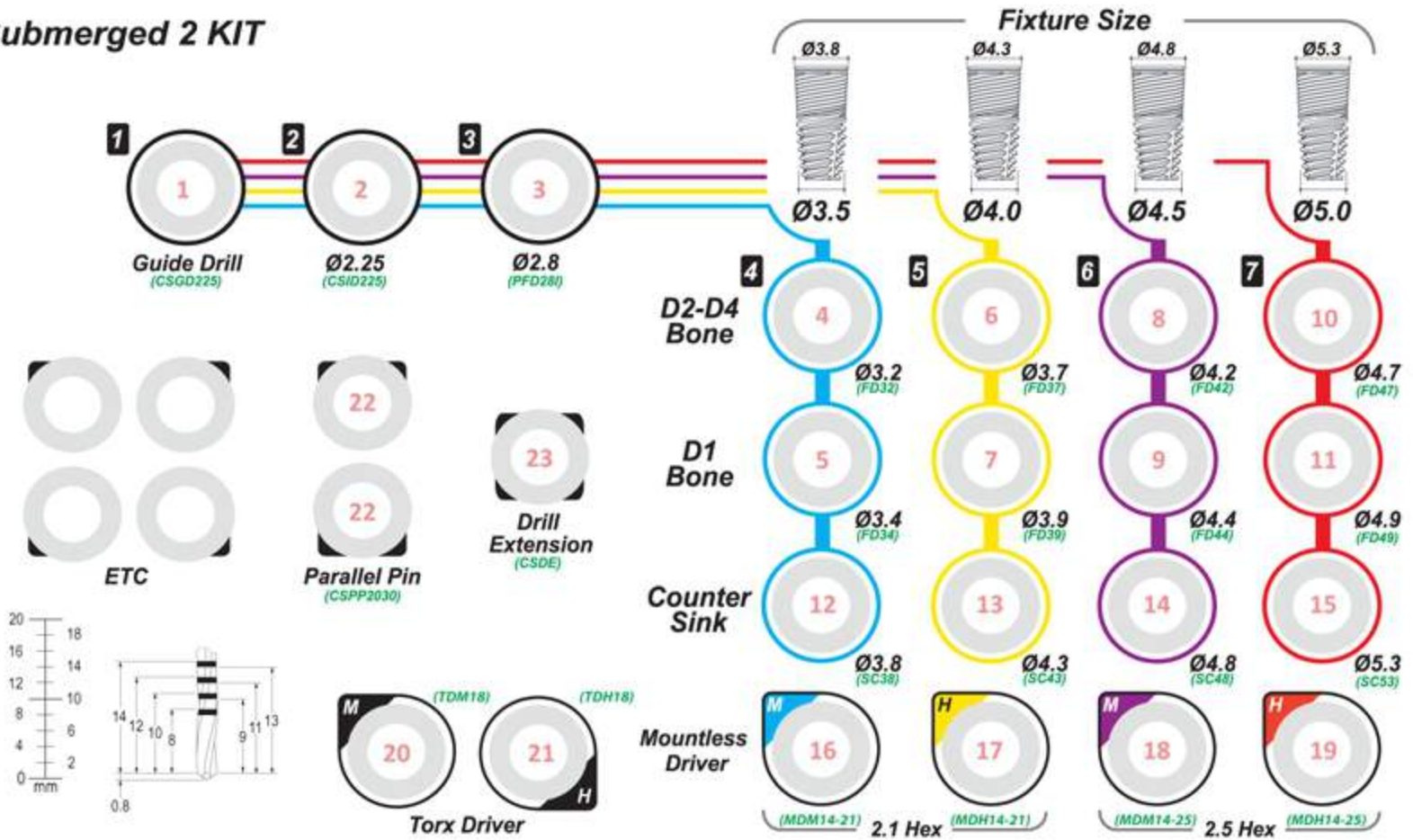


Abutment Screw



Surgical KIT Case

Submerged 2 KIT



1. Guide Drill (CSGD225)



2. Ø2.25 Initial Drill (CSID225)



3. Ø2.8 Pre-Final Drill (PFD28I)



4. Ø3.2 Twist Drill (FD32)



5. Ø3.4 Twist Drill (FD34)



6. Ø3.7 Twist Drill (FD37)



7. Ø3.9 Twist Drill (FD39)



8. Ø4.2 Twist Drill (FD42)



9. Ø4.4 Twist Drill (FD44)



10. Ø4.7 Twist Drill (FD47)



11. Ø4.9 Twist Drill (FD49)



12. Ø3.8 Reamer (SC38)



13. Ø4.3 Reamer (SC43)



14. Ø4.8 Reamer (SC48)



15. Ø5.3 Reamer (SC53)



16. Ø3.5/4.0 Mountless Driver [Machine] (MDM14-21)



17. Ø3.5/4.0 Mountless Driver [Hand] (MDH14-21)



18. Ø4.5/5.0 Mountless Driver [Machine] (MDM14-25)



19. Ø4.5/5.0 Mountless Driver [Hand] (MDH14-25)



20. Torx Driver Long [Machine] (TDM18)



21. Torx Driver Long [Hand] (TDH18)



22. Parallel Pin (CSPP2030)



23. Drill Extension (CSDE)



24. Ratchet Wrench



25. Depth Gauge (CSDG)



Drill Sequences

Ø3.5 Fixture (10mm)



Ø4.0 Fixture (10mm)



Ø4.5 Fixture (10mm)



Ø5.0 Fixture (10mm)



* Please be careful not to lose balance when drilling during operation.

How to open the package

01



Check the size of fixture and pull out the product from the box.

02



Rip off the paper on plastic case and pull out the ampoule.

03



Hold plastic ampoule and rotate the cap to open.

04



Check inside of fixture.

05



Pull out mountless driver carefully after it firmly combined with fixture by moving mountless driver right and left direction in the fixture.

06



Implantation (Use CSM mountless driver softly in right and left way till it firmly combined with fixture).

07



Hold up the ampoule cap and remove cap cover.

08



Use CSM torx driver and connect the screw and tighten coupling of the cover screw into the fixture.