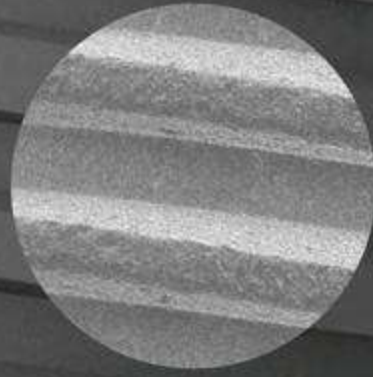


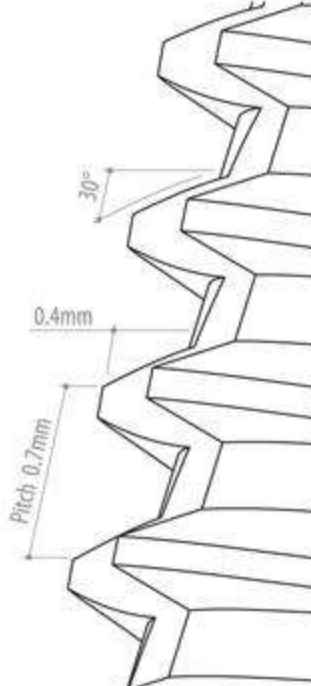
NEW



Active
RBM Surface
(RA: 1.2~1.8um)

Internal
Connection
(Compatible with Submerged System)

Powerful
Thread
(Triple Thread Point)



Intensity
Cutting
Edge

SPEED
SAFETY
SIMPLE

S **|||**
Submerged **|||**



Ø3.6 Implant
(2.1 Double Hex)



Ø4.0 Implant
(2.5 Hex)



Ø4.4 Implant
(2.5 Hex)



Ø4.8 Implant
(2.5 Hex)



**Submerged III
Surgical KIT**

